

Access Files from Android Device

ISL Light for Android



1

Download

ISL Light Android from Google Play.

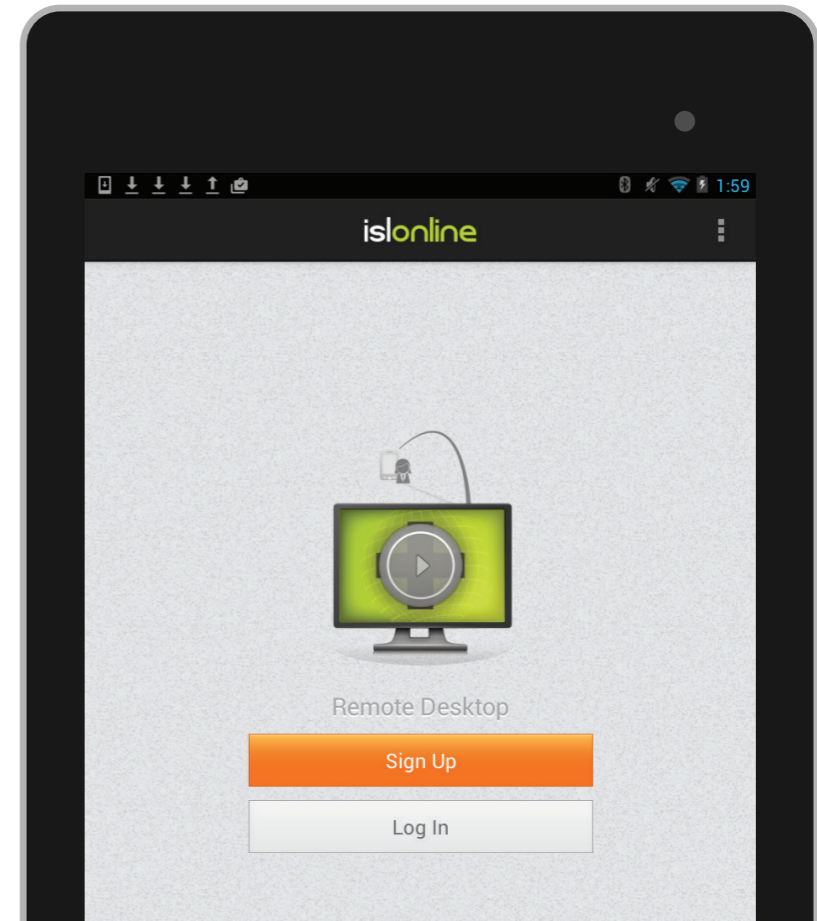
Available for Free



2

Sign Up / Log In

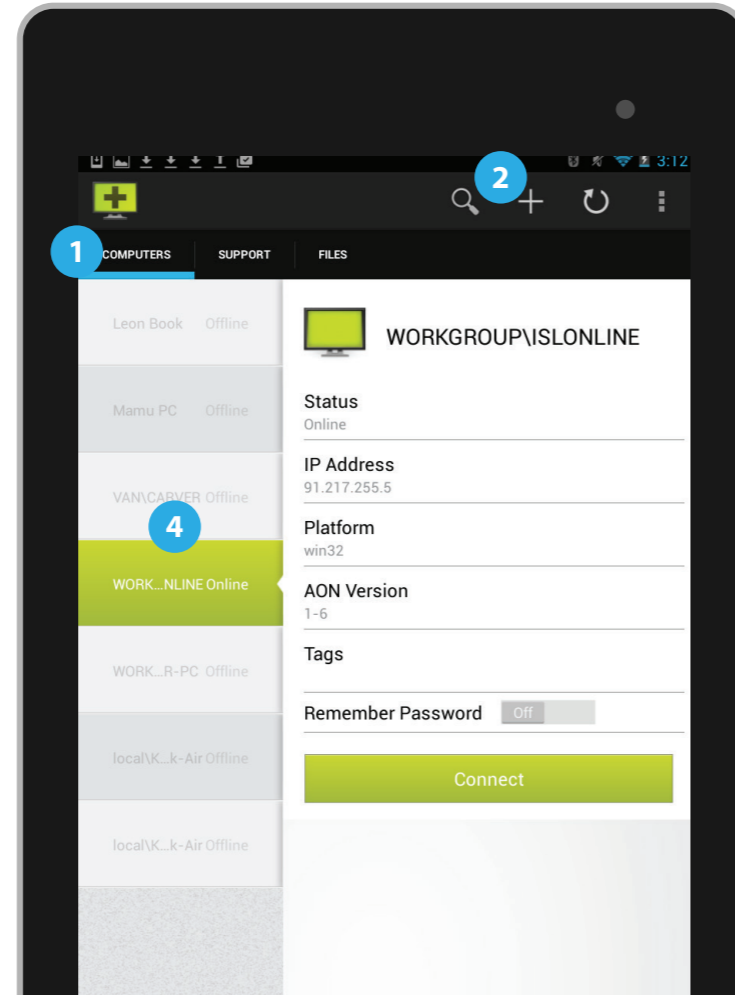
Create your ISL Online account and start the 15-day free trial.



3 Setup Remote Access & Connect

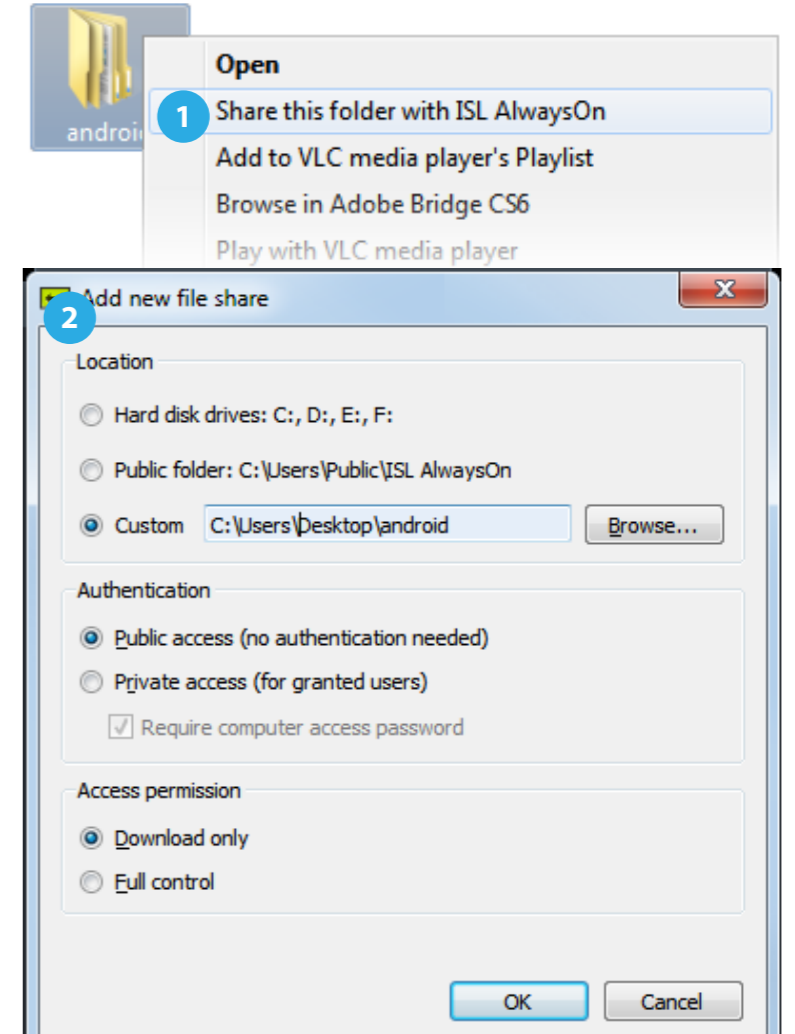
Open the ISL Light App on your device and log in.

- 1 Select COMPUTERS.
- 2 Tap the "+" button and send access link in an email.
- 3 Run the link on the computer and install remote access.
- 4 The computer shows up on your remote computers list.



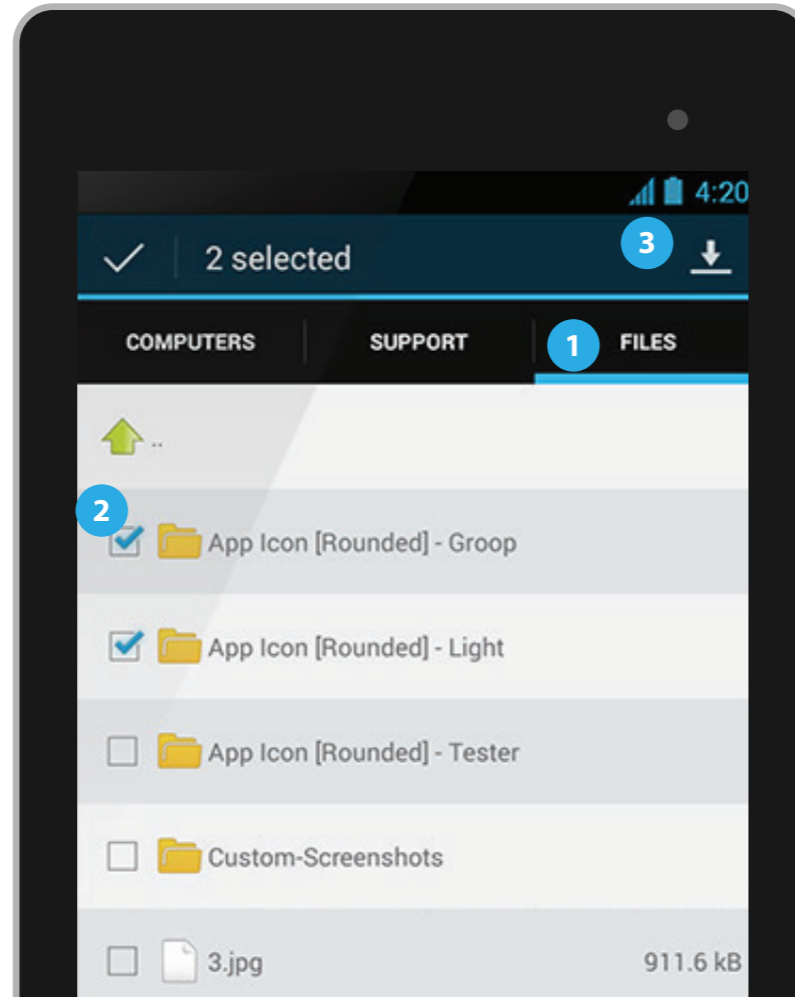
4 Share Files on Your Computer with ISL AlwaysOn

- 1 Right click on a folder you want to share and choose »Share this folder with ISL AlwaysOn.
- 2 Set access rights.



5 Access Files from Your Android Device from Anywhere

- 1 Choose FILES and select the remote computer which holds the files you want to access.
- 2 Select file(s) or folder(s).
- 3 Download them by tapping the button in the top right corner.
- 4 The files are saved on the SD card in the Download folder.



Why File Sharing with ISL AlwaysOn Is Good?

- You don't have to upload files to the cloud.
- All files stay on your computer.
- There is no shared space quota, the only limit is your disk space.